

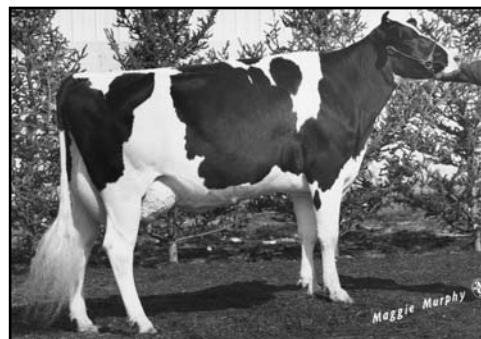


**RIDGEDALE MESSIAH LASS
(5E-94 EX-MS)**

10-01 3x 365d 33,870 3.7% 1245 3.0% 1015
2nd Dam of Lot 53

**RIDGEDALE PRESTAR LASSIE
(2E-92 EX-MS)**

6-02 2x 365d 24,050 3.0% 713 2.8% 681
3rd Dam of Lot 53



**BIRCHMERE TIDY BURKE LOIS
(2E-90)**

6-06 2x 355d 23,230 3.7% 856
4th Dam of Lot 53

LOT 53 RIDGEDALE QUEEN LATEEFAH 137654282 100%RHA

Born 8/8/2006

PPTI +1093M
PTA +1.03T +1.05UDC +.38FLC +2.7PL 8/2006
Potential 5th Generation VG or EX!

RIDGEDALE ESCALATE 133808269

PPTI +1422M
PTA +334M +19F -3P 41%R 8/2006M
PTA +1.45T +1.26UDC +.93FLC 41%R 8/2006M

RIDGEDALE LACE 15429706

VG-88 EEEGV 9-08
7-06 2 365 23010 4.5 1032 3.0 691
5-07 2 365 25510 3.9 1004 2.9 747
4-08 2 306 20840 4.3 906 3.0 616
3-04 2 36 20760 4.3 886 3.1 652
9-05 2 365 20460 4.1 841 2.8 582
LIFE 2965 145340 4.2 6108 3.0 4401

4th Dam: Birchmere Tidy Burke Lois
(2E-90)
6-06 2 355 23230 3.7 856
LIFE 3670 210950 3.7 7837

COMESTAR OUTSIDE-ET 6026421C TV TL

CAN EX-Extra GM TPI +1574M
PTA +1.53T +1.30UDC +1.66FLC 99%R 8/2006M
Sire 1 All-American & 2 Res All-American
Sire 1 All-Canadian

RIDGEDALE ESTEL 123278870

EX-93 EEEEE 2E 8-00
4-08 3 365 28310 3.8 1081 2.8 806
7-05 3 305 26030 4.2 1086 2.7 707
LIFE 1899 136790 3.8 5139 2.8 3832

HANOVERHILL RAIDER-ET 390409C TV TL

CAN EX-Extra TPI +1067M
PTA +1.12T +.69UDC +.65FLC 99%R 8/2006M
Sire 1 All-American 3 Res All-American
Sire 2 All-Canadian & 4 Res All-Canadian

RIDGEDALE MESSIAH LASS 11772218

EX-94 EEEEE 5E 15-01
10-01 3 365 33870 3.7 1245 3.0 1015
8-04 3 365 30730 3.6 1101 2.8 873
6-06 3 365 32810 3.5 1152 2.9 966
13-01 3 365 23900 3.6 866 2.9 690
5-06 3 301 22140 3.9 863 3.0 665
LIFE 4378 288890 3.510216 3.0 8694
65

RONNYBROOK PRELUDE-ET 392457C TL TD

CAN GP-81-5Y GM
Sire 1 Res AC

COMESTAR L OR BLACK-ET 5311227C

CAN VG-87-5Y 16*
3-11 2 365 35745 3.7 1325 3.0 1056

STARTMORE RUDOLPH-ET 5470579C TV TL

CAN EX-Extra GM
Sire 1 AA & 1 Res AA

RIDGEDALE ESTELLE-ET 14592677

EX-95 EEEEE 3E 9-04
4-10 3 365 35580 3.9 1403 2.7 945
LIFE 2635 194340 3.7 7281 2.8 5459

HANOVERHILL STARBUCK 352790C TV TL

CAN EX-Extra TPI +914
Sire 43 AA & 29 Res AA

MIL-R-MOR ROXETTE 9177638

EX-90 EEEV GMD DOM 30* 7-04
7-01 2 365 24530 4.7 1153
21 EX Progeny - Canada's 1st 30* Brood Cow

HANOVER-HILL MESSIAH-ET 1838556

EX-92 EEE 5-05 TPI +402

RIDGEDALE PRESTAR LASSIE 10605892

EX-92 EEEE 2E 6-00
6-02 2 365 24050 3.0 713 2.8 681
LIFE 1892 119920 3.0 3569 2.9 3455