

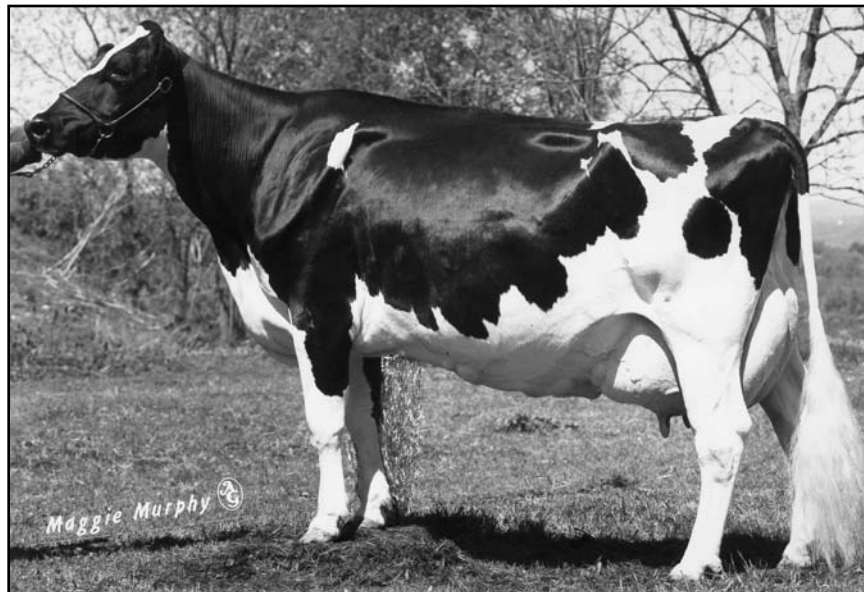
~ *Ridgedale Fond Example* ~

Ridgedale purchased Birchmire Reflection Emma, the top selling calf at the 1966 Somerset, NJ Calf Sale. This calf was sired by Romandale Reflection Marquis and the granddaughter of a VG granddaughter of Creston Twenty Grand (a bull that many say was 20 years ahead of his time).

Emma went on to score VG and left a 2E-EX daughter by Nunesdale Originator. The Originator left a VG-87 daughter by Skagvale Startrek. The Startrek left us Ridgedale Quality Extra, who was an EX daughter of Quality Ultimate. The Ultimate went on to mother Ridgedale Fond Example 3E-95.

Example's best daughter is Ridgedale Estelle by Townson Lindy. And just like her mother, Estelle is also scored 3E-95. Estelle has left five EX daughters to date by Progress, Rudolph, Storm and Mandel. She also has seven VG daughters by Lee, Storm, Progress, Mandel, Stardust and Charles.

Example also has three EX 94 granddaughters – Emmylou, Emera and Eppie II. Emera placed 10th in the Aged Cow Class at the 2004 World Dairy Expo, where we understand she was criticized for being too youthful. We know that's a "good problem", as we enjoy the longevity and fine breeding this foundation has proven at Ridgedale.



RIDGEDALE FOND EXAMPLE (3E-95)