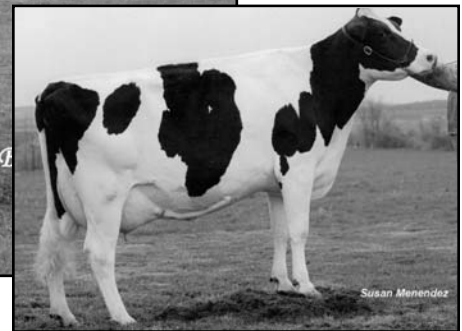


**RIDGEDALE ROXY STOREE (VG-88 VG-MS 3Y)**

2-11 3x 307d 21,290 3.7% 798 2.9% 612  
**Sells as Lot 12 & Maternal Sister to Lots 13 & 14**



**RIDGEDALE ROXY BUTTON-ET  
 (2E-92 EX-MS)**

**Dam of Lots 12, 13 & 14**

**LOT 12 RIDGEDALE ROXY STOREE 133427396 100%RHA**

*Fresh 8/16/06*

**Born 8/10/2002**

VG-88 EEEEE 3-07 CTPI +1160  
 PTA +1.98T +1.04UDC +.89FLC +.6PL 8/2006  
 2-11 3 307 21290 3.7 798 2.9 612  
 Potential 6th Generation Excellent!  
 Maternal Sister to Lots 13 & 14

**SILKY GIBSON-ET 6215479C TV TL**

CAN EX ST TPI +1309M  
 PTA -597M +26F -9P 99%R 8/2006M  
 PTA +.19%F +.04%P 11%US  
 PTA +1.89T +1.55UDC +.53FLC 99%R 8/2006M  
 Sire 4 All-American & 2 Res All-American  
 Sire 2 All-Canadian & 4 Res All-Canadian

**JUNIPER ROTATE JED-ET 2040728 TV TL**

EX-96 EEEE 10-05 GM TPI +980M  
 Sire 3 All-American & 1 Res All-American  
 Sire 3 Res All-Canadian

**ELKENDALE CLEITUS IMPALA-ET 13424961**

VG-85 VVV+ DOM 2-08 18\*  
 3-03 2 365 30558 4.1 1257 3.2 989  
 2-01 2 357 23320 4.4 1033 3.3 766

**4th Dam: C Glenridge Citation Roxy**

(4E-97 EX-MS GMD)  
 5-06 2 365 21308 5.1 1086  
 2X Queen of the Breed!  
 All-Time All-American Produce  
 16 EX dtrs. - over 100 EX descendants in  
 the Roxy Family!

**5th Dam: EX-90 GMD 6\***

LIFE 218636 3.9 8581  
 3X All-American Produce of Dam

**6th Dam: VG-85 5\* Brood Cow - 249,580LT**

**RIDGEDALE ROXY BUTTON-ET 129443021**

EX-92 EEEVE 2E 6-03  
 5-02 3 365 32480 2.6 853 2.7 875  
 2-08 3 339 27580 3.1 845 2.7 745  
 3-09 3 305 26590 3.3 884 2.7 730  
 Maternal Sisters to Button:  
 ~Ridgedale Roxy Barrie-ET (VG-88 VG-MS)  
 4-02 3 365 24800 4.1 1014 2.9 707  
 Sells as Lot 15  
 ~Ridgedale Roxy Dag-ET (EX-90)  
 3-02 3 365 26030 3.7 969 3.1 796

**BROWDALE STARDUST 398436C TL**

CAN EX TPI +887M  
 PTA +1.38T +.25UDC +2.24FLC 99%R 8/2006M  
 Sire 5 All-American & 4 Res All-American  
 Sire 7 All-Canadian & 2 Res All-Canadian

**C BOND HAVEN MARK ROXY-ET 14748705**

EX-95 EEEEE 5E DOM 16-03  
 9-05 3 365 39970 3.4 1376 2.8 1134  
 5-02 3 365 39102 3.9 1394 2.9 1134  
 8-01 3 365 35940 3.8 1383 2.8 1003  
 3-04 3 365 30420 3.5 1075 3.0 901  
 2-03 3 347 23120 3.6 831 3.0 692  
 LIFE 3272 237820 3.7 8703 2.9 6995

**HANOVERHILL STARBUCK 352790C TV TL**

CAN EX Extra  
 Sire 43 AA & 29 Res AA  
 Sire 36 AC & 28 Res AC

**BROWDALE S C ELLA 3657021C**

CAN EX 2E 6\*  
 6-01 2 365 28130 4.5 1270 3.0 851  
 LIFE 2613 172009 4.3 7475 3.1 3600

**WALKWAY CHIEF MARK 1773417 TL TD**

VG-87 +EV 8-00 GM  
 Sire 1 AA & 3 Res AA & Sire 1 AC

**MIL-R-MOR ROXETTE 9177638**

EX-90 EEEV GMD DOM 30\* 7-04  
 7-01 2 365 24530 4.7 1153  
 LIFE 2150 121417 4.7 5725  
 21 EX Progeny - Canada's 1st 30\* Brood Cow